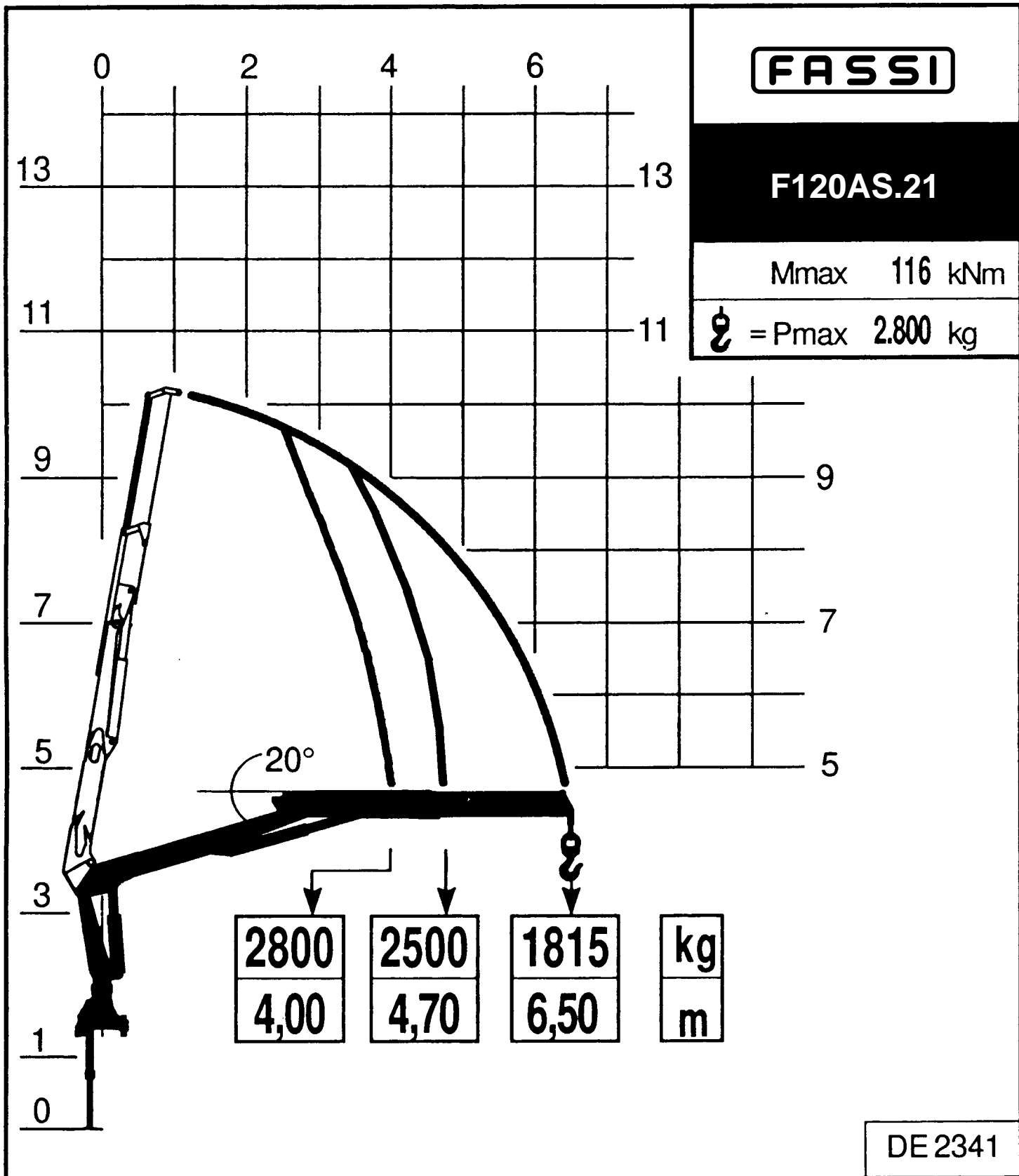


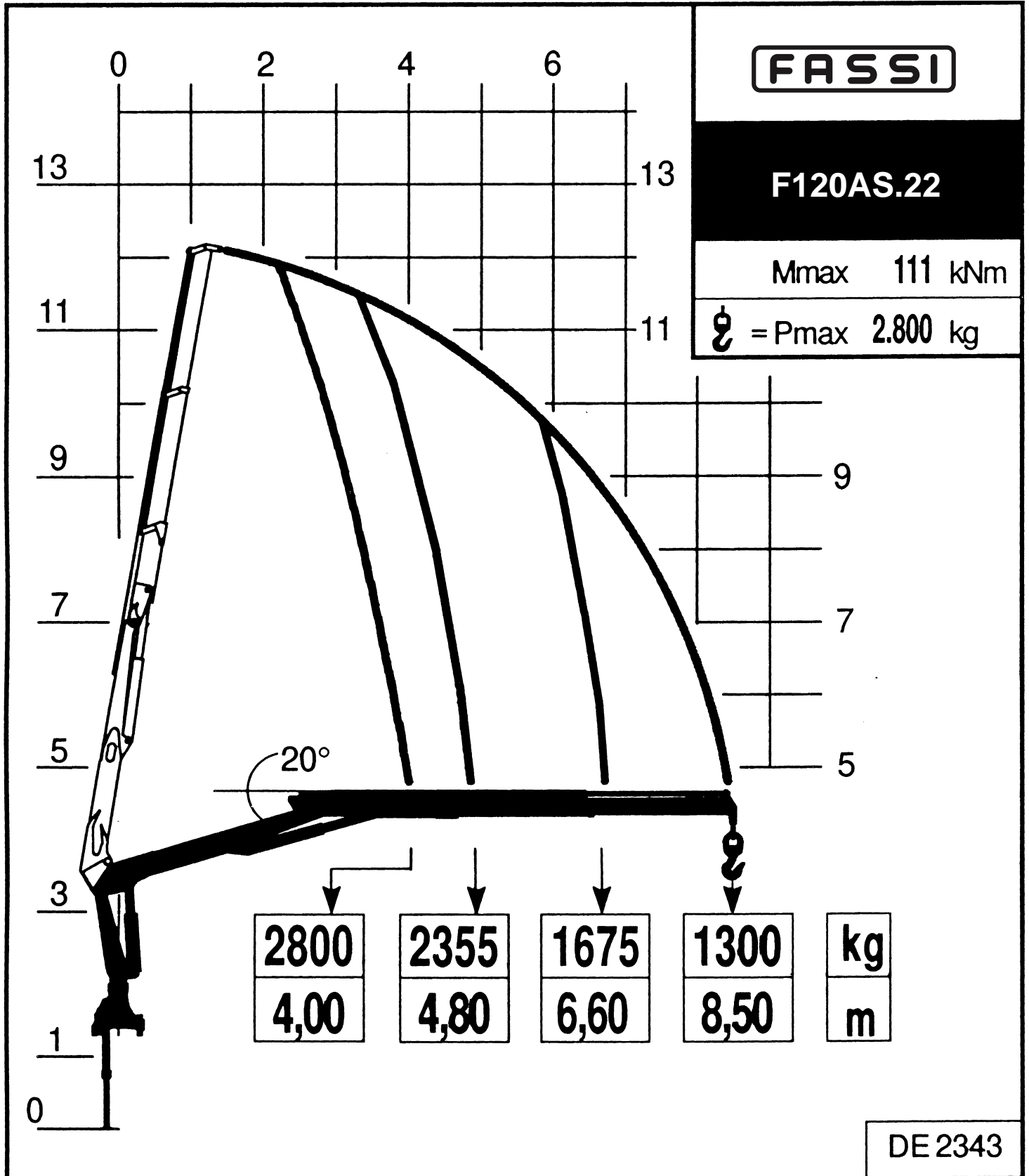
Via dei Carmelitani, 2  
24021 Albino BG  
tel. ++39 35 776400  
fax ++39 35 755020  
www.fassigroup.com  
fassi@fassigroup.com

LOAD DIAGRAM WITH LIFTING MOMENT LIMITING DEVICE

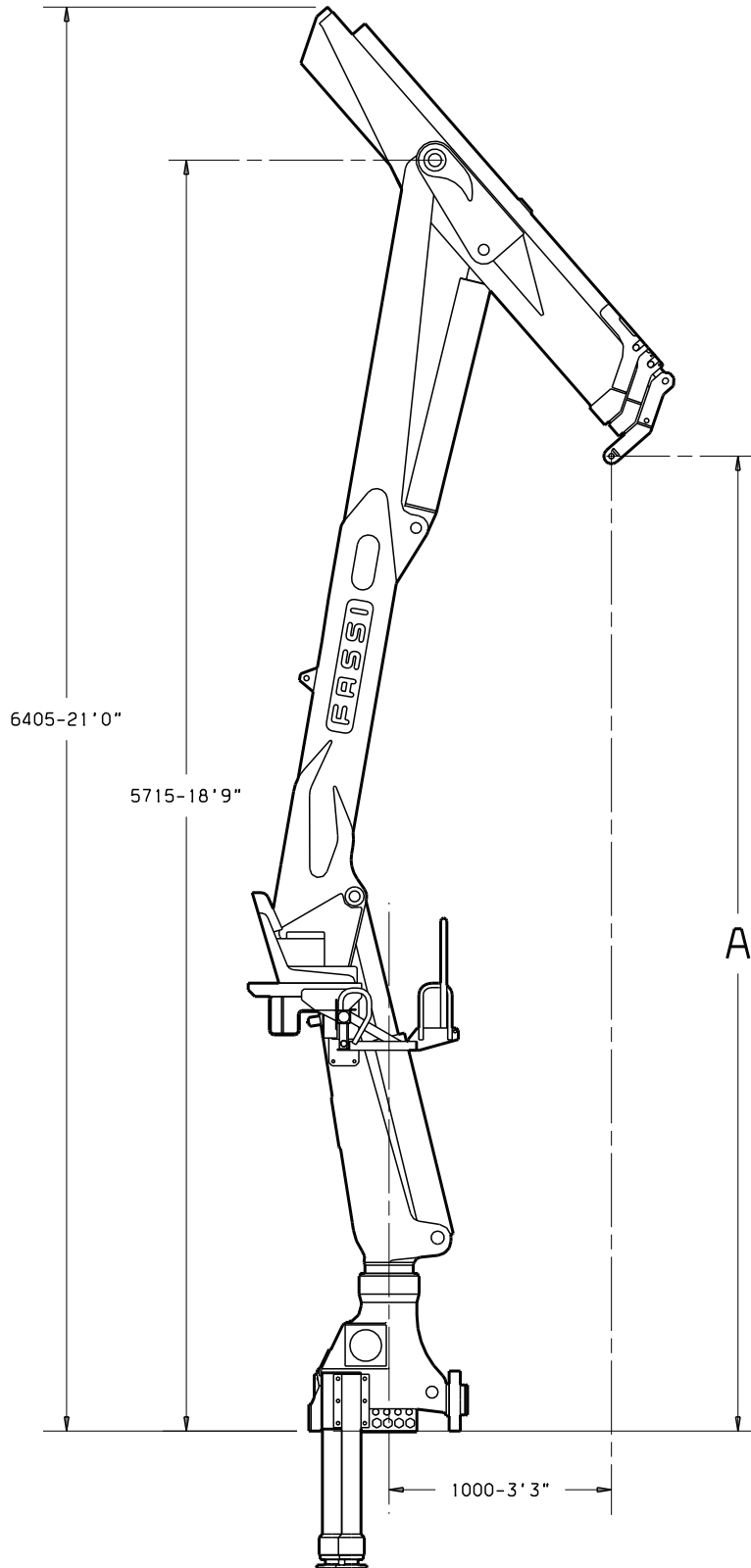


Via dei Carmelitani, 2  
24021 Albino BG  
tel. ++39 35 776400  
fax ++39 35 755020  
www.fassigroup.com  
fassi@fassigroup.com

LOAD DIAGRAM WITH LIFTING MOMENT LIMITING DEVICE



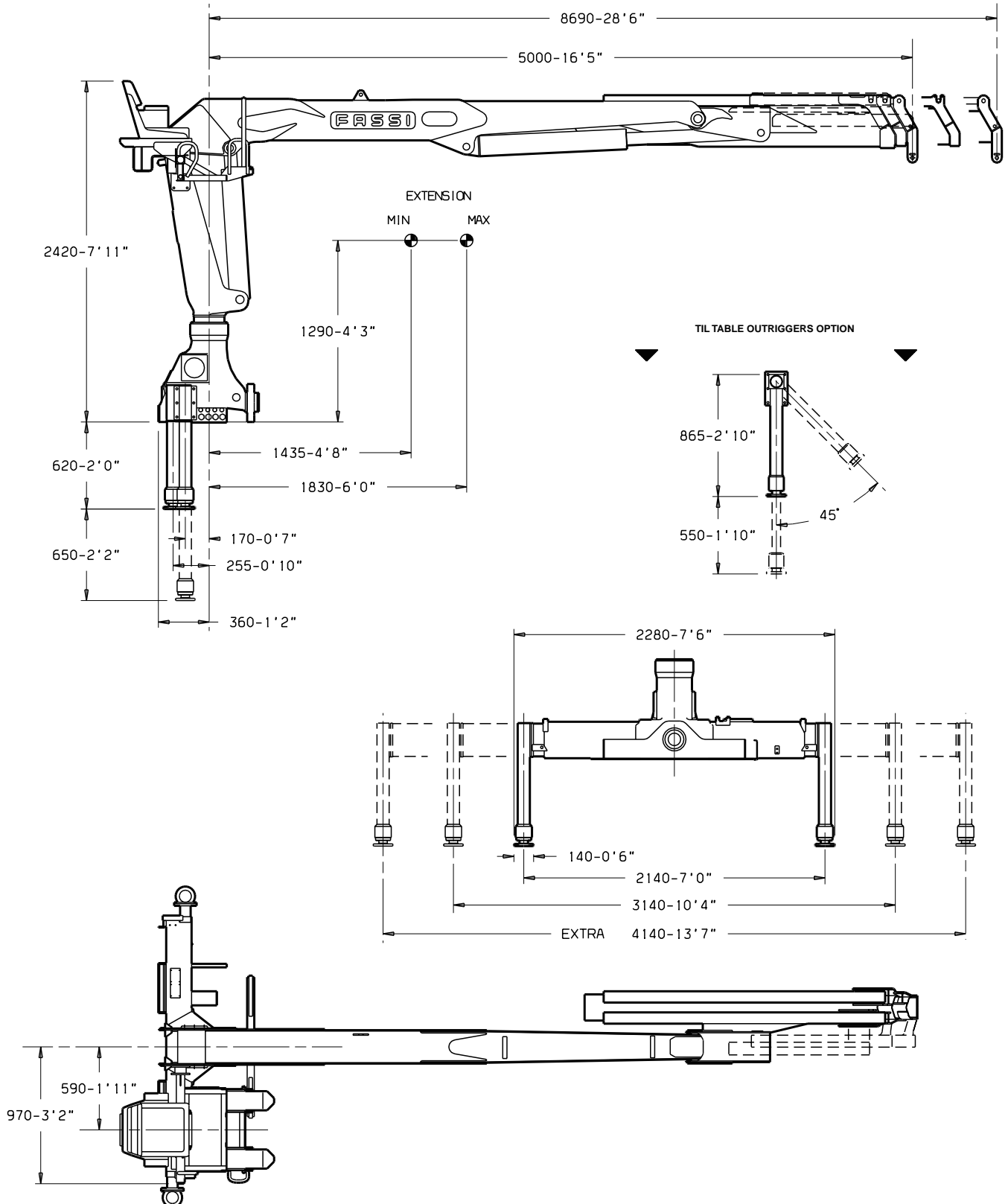
### MAXIMUM HEIGHT UNDER HOOK



GRU	A	
F120AS.21	4475	14'8"
F120AS.22	4385	14'5"

Via dei Carmelitani, 2  
24021 Albino BG  
tel. ++39 35 776400  
fax ++39 35 755020  
www.fassigroup.com  
fassi@fassigroup.com

## WEIGHT, DIMENSIONS AND BARYCENTRE POSITION

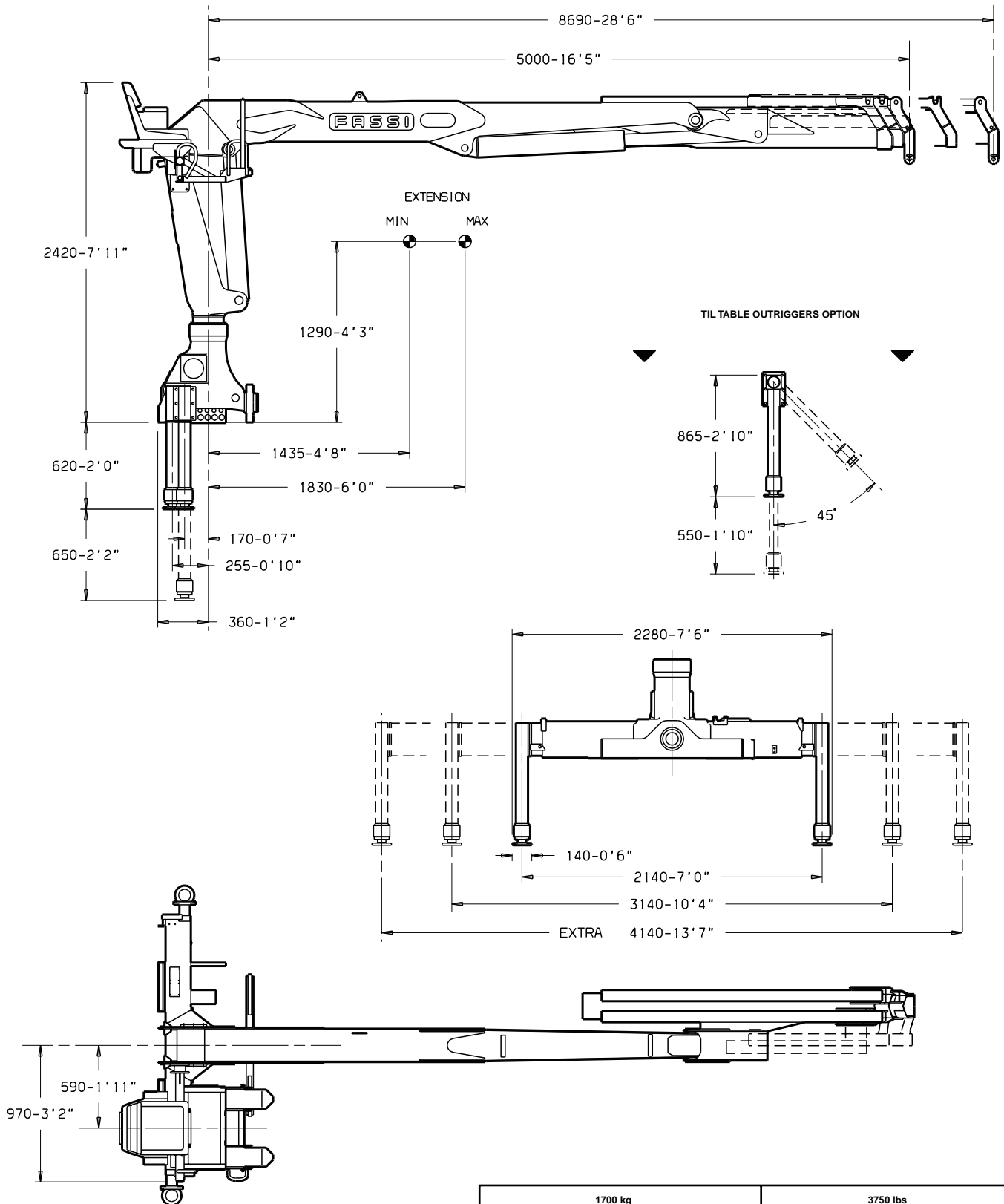


1575 kg	3470 lbs
WEIGHT OF THE CRANE WITH EMPTY TANK, STANDARD STABILIZATION	

Data and descriptions are approximate and not binding

Via dei Carmelitani, 2  
24021 Albino BG  
tel. ++39 35 776400  
fax ++39 35 755020  
www.fassigroup.com  
fassi@fassigroup.com

## WEIGHT, DIMENSIONS AND BARYCENTRE POSITION

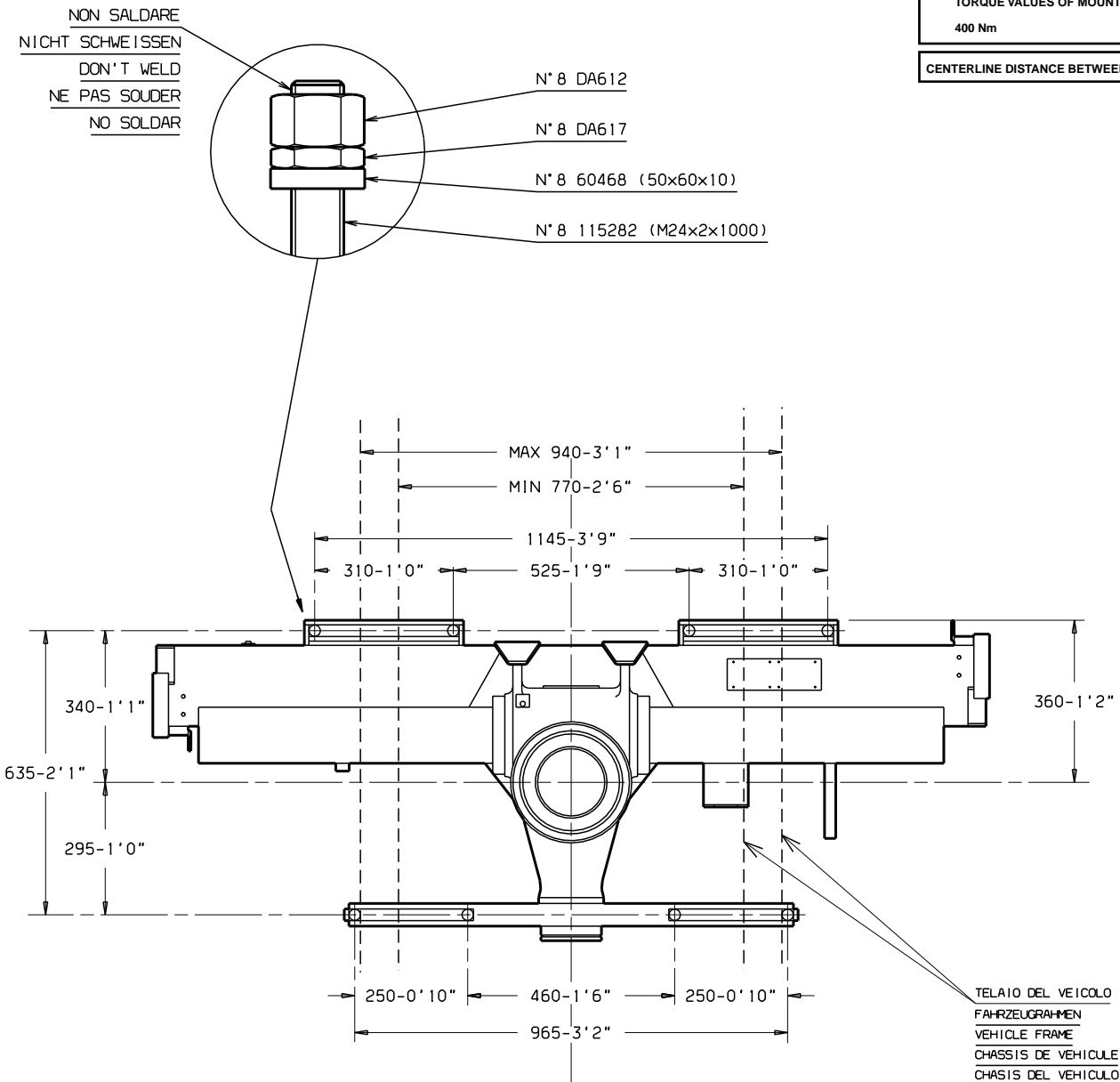


1700 kg	3750 lbs
WEIGHT OF THE CRANE WITH EMPTY TANK, STANDARD STABILIZATION	

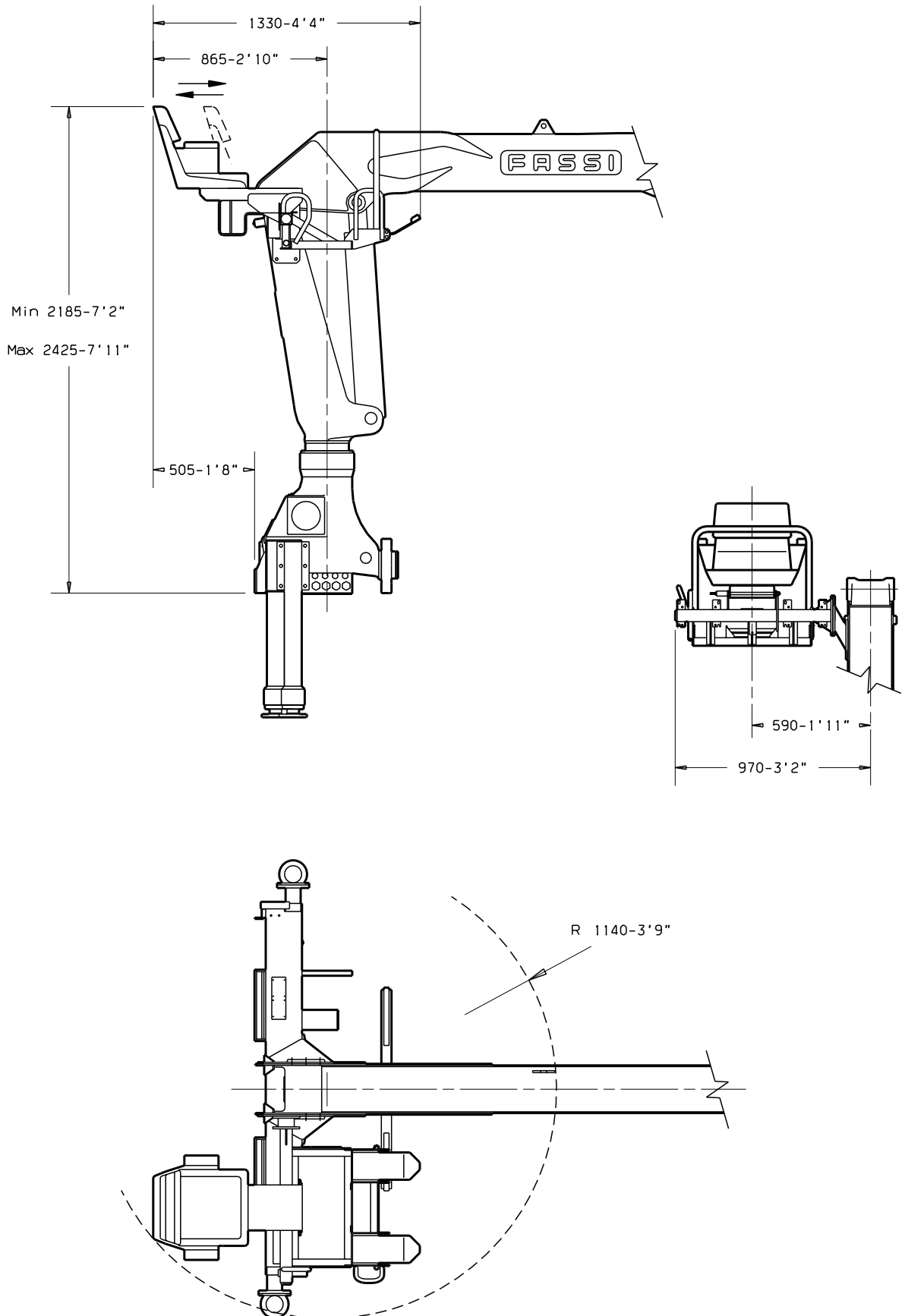
Data and descriptions are approximate and not binding

Via dei Carmelitani, 2  
24021 Albino BG  
tel. ++39 35 776400  
fax ++39 35 755020  
www.fassigroup.com  
fassi@fassigroup.com

## LOCATION OF MOUNTING BOLTS



Via dei Carmelitani, 2  
24021 Albino BG  
tel. ++39 35 776400  
fax ++39 35 755020  
www.fassigroup.com  
fassi@fassigroup.com

**POSITION AND DIMENSIONS OF TOP SEAT ON COLUMN**

Via dei Carmelitani, 2  
 24021 Albino BG  
 tel. ++39 35 776400  
 fax ++39 35 755020  
 www.fassigroup.com  
 fassi@fassigroup.com

## INSTALLATION

GRU	A
F120AS.21	10210-33'6"
F120AS.22	12155-39'11"

